

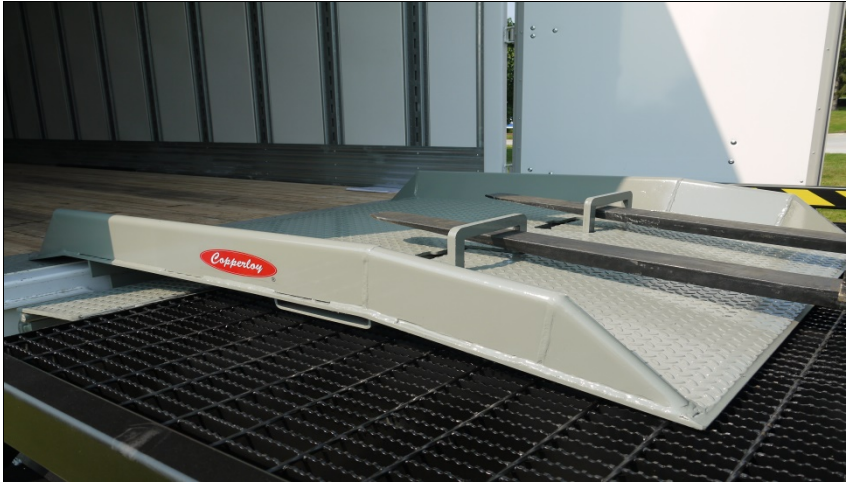


Dock Boards & Dock Plates

How to Select the Correct
Board or Plate for Your
Application



Dock Boards vs. Dock Plates



DOCK BOARDS

- Provide higher capacities
- Have curbs
- Lift loops or chains are used as a lifting device
- Primarily used for fork trucks
- Made of steel or aluminum



DOCK PLATES

- Have lower capacities
- Do not have curbs
- Typically used for pallet jacks, dollies or carts
- Nylon straps or chains are used as a lifting device
- Made of steel or aluminum

To select the proper product find out what equipment is being used



Once the equipment is determined,
the **capacity** can be calculated

$$\text{Weight} + \text{Load} \times 0.9 = \text{Capacity}$$

Example:



Forklift weighs

11,000 lbs.

+

Max Load

4,000 lbs. X 0.9

Required Dock Board Capacity = 13,500 lbs.

Length:

Is determined by the maximum amount of height difference between the dock height and the floor height of the trailer(s) being serviced.



Example:

Truck height **54"** - Dock height **48"** = **+6"** max height difference

+6" is the max height difference

TABLE FOR DETERMINING DOCKBOARD LENGTH

FORK LIFT TRUCKS: 11° BEND GRADE (19%)

MAX HEIGHT DIFFERENCE (INCHES)	4	5	6	7.5	8.5	9.5	10.5	12	13	14	15	16
BOARD LENGTH (INCHES)	30	36	42	48	54	60	66	72	78	84	90	96

Lengths shown include 11" lip. If refrigerator trucks are used, must specify a 14" lip.

WALKIE TRUCKS / PALLET JACK: 8% BEND GRADE (14%)

MAX HEIGHT DIFFERENCE (INCHES)	3	3¾	4½	5½	6	7	8	8¾	9½	10½	11¼	12
BOARD LENGTH (INCHES)	30	36	42	48	54	60	66	72	78	84	90	96

Example: 6" max height difference = **a 42" long board** for fork trucks would fit the application (max grade of 19%).

If truck bed height is **LOWER** than dock height?

THERE ARE TWO OPTIONS:

**OPTION 1: The dock board* or dock plate must be used in reverse.
(meaning the board/plate will be in the truck and the lip is on the dock)**

-OR-

OPTION 2: Raise the truck bed with wheel risers.



****If dockboard is used in reverse, chains must be added instead of lift loops.***

Average Floor Heights of Empty Semi-Trailers and Trucks

Over-the-Road (regular)	48" - 54"
Over-the-Road (heavy duty)	51" - 56"
Refrigerated	50" - 56"
Flat Bed	58" - 60"
City Delivery	42" - 50"
Container on Chassis	52" - 58"
Container on Moving Van	32" - 42"

Width:

Copperloy recommends a minimum of 60" wide dock boards for lift trucks and 54" wide dock boards for pallet truck use.



***Remember:** Safety curbs take up to 6" to 8" of usable space depending on the board.

Comparison of boards and plates

	Steel Treadplate	Aluminum treadplate	Steel Curbs	Aluminum Curbs	Lifting Loops (optional)	Lifting chains	Lifting Chains	Nylon Lift Straps	1k-14k capacity	10k-15k capacity	15k + capacity	11" lip length
Steel dock board with welded curbs (STR)	X		X		X	X					X	X
Aluminum dock board with bolt on steel curbs (ABC)		X	X			X				X		X
Steel dock plates (SR)	X						X		X			X
Aluminum dock board with welded aluminum curbs (ATR)		X		X		X				X		X
Aluminum dock plates (LP, TLP)		X						X	X			X



**Questions?
Please call
800-321-4968**

